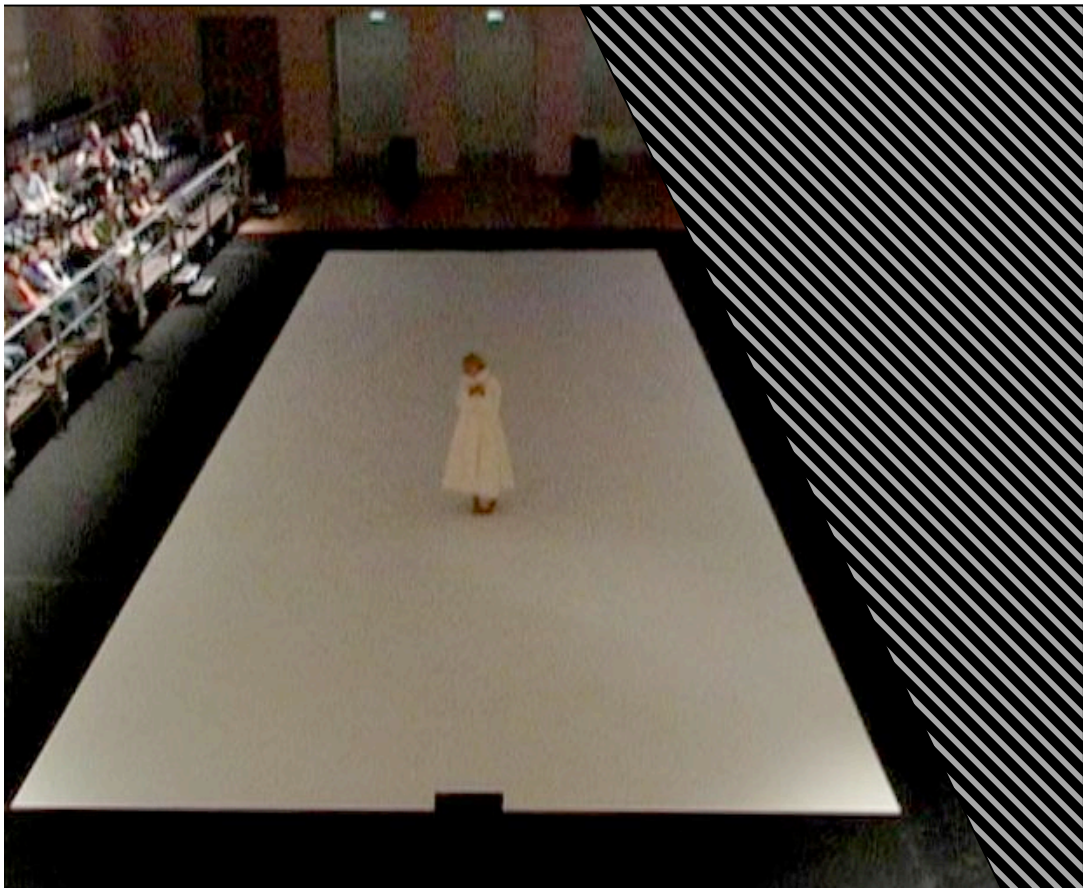


GENERAL	Movement A is an approx 1 hour performance for 1 dancer. Images and stroboscopic light are projected onto a white dance floor. 4 LCD/DLP projectors 1400x1050 12 Martin Atomic 3000 DMX-strobe-lights including 5pin DMX access point flying sound-system including substantial low end.	
CREW MEMBERS	Toshiko Oiwa	dancer
	Ulf Langheinrich	visual and sound artist live control of sound light and image
	Dirk Langheinrich	computer management and technical assistance
SITE	An English speaking person with direct contact to the production manager must be available to the artist during set up and rehearsal Computer equipment and other electronic facilities must be secured/ lockable 1 Computer monitor with the same native resolution as the projectors needs to be provided upon arrival. (1440x1050 or 1280x1024 exactly like the projector) Unrestricted Internet and telephone access Calm and private room to the dancer including shower and mirror	
VENUE	White dance-floor: dimensions minimum 2x8 maximum 3x16 meter with a soft layer below the actual dance-floor The dance floor is surrounded by black carpet . (black dance floor is not suitable!) The dance-floor is the projection area for all projectors and the strobe lights Apart from the white dance floor any other material in the space should be selected with the aim of maximum light absorption depending on space-dimensions the amount of projectors / projection-fields may be reduced (here always numbered as 4) instead of audience seated on two sides a one site seating is possible too.	



4 identical projectors,

ANSI-lumen	2500 minimum
contrast ratio	as high as possible DLP is better but could be unsuitable. Some products malfunction in hanging position If LCD panel 3x1"
additional wide angle lenses ? !	
native resolution	1400x1050 (minimum 1280x1024)
lens shift	remote controlled H + V
focus	remote controlled !
input	VGA (RGB)
output	VGA (RGB) for daisy chaining the signal

All projectors display the same signal, all of one source, basically noise and pure colour

It is crucial to obtain one perfectly equal image: the projected material displays all weaknesses of the projectors !

VGA in- and outputs are needed to "daisy-chain" the projectors.

The projectors, mounted on the ceiling projecting down. It is important to position the projectors precisely straight down.

keystone adjustments may result in image artefacts. Some DLP may be unsuitable.

if room heights not higher then 4 metres (as in gallery performance situation)wide angle lenses are needed to get an image diagonal of at least 3.3 meters.

LIGHT

6- 8 fresnel 2kW per side depending on dimensions of projection field

diffused equal light to the total projection area from both sides parallel to the length of the projection field.

Angle sharper than 60°,

One side : in red L106

Separate DMX address for each side.

All fresnel of each side share identical DMX addresses for dimming,

Strobes (organized by the venue) Martin ATOMIC 3000

<http://www.martin.com/product/product.asp?product=atomic>

No other type but exactly this strobe !

Undeclared and/ or not confirmed replacement of strobes with other types may cause cancellation of the show!

up to 24 units minimum amount is 9

Amount of necessary strobes depends on dimensions of stage area

Final amount to be confirmed by the artist in advance.

Undeclared and/ or not confirmed reduction of strobes below the confirmed amount may cause cancellation of the show!

masking around the whole strobe area with black curtain to on either side of the row of strobes must be deep enough to deduce light emission (blinding) of stroboscopic light into audience. But this must not interfere with projector beam.

Light-spill from the side of each strobe needs to be avoided :

Metal black foil " CINEFOIL I" to reduce light spill can be fixed by light matt black metal-gaffer tape.

Strobes from a centre truss, heading straight down

Strobe position as low as possible towards the projection field

without obstructing the view of upper rows of audience without blinding people.

Bulbs are all parallel to the projection Lower position requires diffusion folio for all strobes.

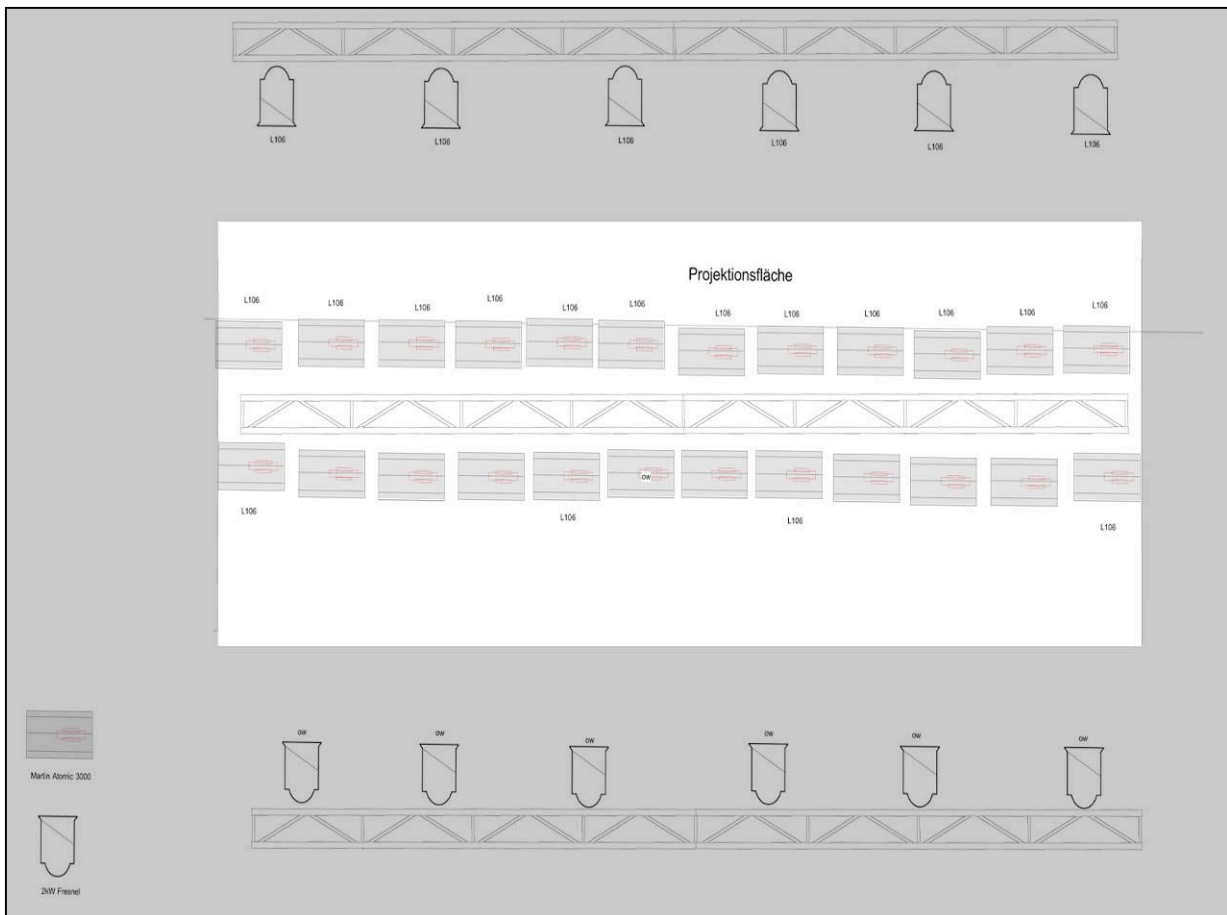
usable for high temperatures i.e. "254 New Hampshire Frost" by lee filters).

Two thirds of the strobes covered in red L106

three different addresses for each third of the total amount of strobes.

DMX- numbers red-10000000-white-01000000-red-10100000

DMX-Cables: The output of the DMX controller provided by the group is a 5 pin DMX output !



SOUND

sound source

stereo signal + extra bass signal

processing

1 analogue small Mixing board no menus, no presets
 !Half or full parametric channels
 All Faders in neat condition, Absolutely no cracking during fader moves !
 1 LEXICON PCM 70 or 80 for further treatment
 4 DI boxes for asymmetrical computer output

Display in space

depending on the space various solutions are possible,
 Flying multiple small speakers is preferable.
 The sound is meant to feel unfocussed and immersive.
 speakers should therefore not be detectable
 Sound engineer may find a suitable solution
 Irrespective of its intended airy appearance
 it does need significant amount of subsonic

Very good substantial sub woofer that may even feel disproportionally big to the other PA

Operating desk : Video, Sound mix and Light all on from one desk with good vision to stage area,
 all sound, DMX control information for strobe-light and projected image will be generated from devices that belong to the artist