

***STAGE < see to "GENERAL Ground plan" >**

- 01 : STAGE AREA:
 W (including both stage wings, 3.5m each) : over 19 m
 D : over 15 m
- 02 : STAGE FLOOR:
 Wooden floor appropriate for contemporary dance performance
 (We will fix the bottom of our screen by screw.
 Please avoid your carpet under the screen line.)
- 03 : AUDITORIUM SEAT :
 Regular theater seats, higher in the back.
 All the seats must have a good view of the stage floor surface.
- 04 : BLACK CARPET :
 For both stage wings plus the passage behind the screen,
 in order to distinguish the stage floor color and to absorb unwanted footstep noises.
- 05 : BLACK LEGS (width over 2.5m) : x 6 sets
 Enough length to cover the entire height from the floor to the ceiling.
 Lighting projector hanging height - minimum 7.5m
- 06 : BLACK CURTAIN (width over 13 m) : x 1
 Enough length to cover the entire height from the floor to the ceiling.
- 07 : BLACK BORDER (width over 13 m) : x 5
 Enough length to cover the entire height from the floor to the ceiling.
- 08 : PARALLEL PLATFORM (UNI-FLEX) : 1m x 2m x roughly 0.6m (h) x 4
 To cover the top of video projectors which set up at the behind of screen.
- 09 : TABLE : 60cm x180cm x70cm(h) : x 4
 For sounds, video and lighting operation.
 The table should be installed in the center of the end row of the audience seats.
- 10 : VACUUM CLEANER : to clean up the carpet x 1
- 11: THEATER STAGE TECHNICIAN :
 1st day for set up x4 persons
 2nd day for set up x2 persons
 Last day for take down x4 persons
- 12: Lading crew :
 1st Setup Day for unloading x 4 persons
 Last Performance Day for take down and loading x 4 persons
- * The screen's bottom frames (aluminum), which will come with the screen,
 will need to be fixed on to the floor with several dozens of wooden screws
 (3 to 4mm in diameter, 30mm long), which will be screwed into the theater floor.
- * Dumb Type will bring special floor carpet for the performing area in front of the screen.
 The size of the carpet is 7.8m (L) x 3m (W) x4 pieces.

***BACK STAGE (COSTUMES AND PROPS)**

- 01: DRESSING ROOM : minimum 3 rooms
- 02: FULL-LENGTH MIRROR : x 2
- 03: TABLE LIGHT for both stage wings and behind the screen : x 5
- 04: CHAIR to put costumes and props at the back stage : x 15
- 05 : HANGER with RACK for costumes at back stage : x 2
- 06: IRON & IRONING BOARD in dressing room : x 1 set
- 07 : WASHING and Dry CLEANING SERVICE for costumes: everyday
 (Should be available in weekend)

***SOUND**

01: SPEAKER

MEYER : MSL4 (Powered Hi-box speaker)	x6 (Lx3,Rx3)
MEYER : 650-P (Powered Sub Woofer)	x4 (Lx2,Rx2)
MEYER : Line Driver LD-1A	x1
MEYER : UPA1 (for stage monitor)	x4
SPECIFIC TECHNICIAN : for adjustment of MEYER SYSTEM	x1 person

* Any other kind of speakers are not acceptable.
Only Meyers can get the appropriate levels and quality of the music for this performance.

* Regarding the set-up positions of the Meyer speakers, please see "GENERAL Ground plan"

02: CD Player with Digital Optical and Coaxial Input/Output	x1
03: DAT Player with Digital Optical and Coaxial Input/Output	x1
04: SHURE UHF Tie-Pin Type Wireless Microphone with receiver	x3
05: Inter Communication System (Head sets at both stage sides as well as sounds, video and lighting tables)	x5 set
06: SOUND TECHNICIAN : for set up and take down	
1st day for set up	x2 persons
2nd day for set up	x2 persons
last day for take down	x2 persons

* The nature of this performance (the sounds are controlled in live and all the technical elements--sounds, video and lighting--are synchronized) requires sounds, video and lighting to be controlled and operated from the operation table installed in the center of the end row of the audience.

* Actual sound pressure is 120 decibel at the mixing position without distortion.

***VISUAL**

- 01 : LIQUID CRYSTAL VIDEO PROJECTOR for NTSC : x1
over 2000ANSI lumens, over XGA
(*dumb type brings : DIGITAL VIDEO PLAYER for NTSC)
- 02 : SLIDE PROJECTOR or PANI : x2

In case using SLIDE PROJECTORs, they should be:

- Xenon lamp over 1 kW;
- Both of them must have "dissolve" feature;
- Must be operated by remote control from the lighting operation table;
- Requires lenses that can project images of the size 4 x 6 meters on the screen with the projectors installed at the back of the audience.

In case using PANI, they should be:

- Xenon over 1 kW;
- Must have DMX shutters so that they can "dissolve" the images;
- Will be operated with Dumb Type's DMX lighting board from the lighting operation table;
- Requires lenses that can project images of the size 4 x 6 meters on the screen with projectors installed at the back of the audience;
- In case they cannot be controlled from DMX dimmer, somebody from the theater's lighting crew must be at the projectors to switch them on and off.

*Cables (for signals for visual and shutter operations) will run from the operation table (back of the audience) to the four projectors (upstage) as well as the one (back of the audience), Please note that some of the cables may run through the audience floor.
In case there is a problem or if you have special cable routes, please let me know.

dumb type performance

memorandum

TECHNICAL REQUIREMENT

Version 5.0. 2001

04

LIGHTING-1

***LIGHTING < see "GENERAL Lighting plan">**

- | | |
|--|------------|
| 01: 14" ~ 17" VGA Monitor Display for MS/DOS - Windows: | x1 |
| 02: DIMMERS: DMX512 manipulable 3kw each | x 90unit |
| 03: PROJECTORS: | |
| ETC Source Four 750kw 19 degrees lens : | x 6 |
| ETC Source Four 750kw 26 degrees lens : | x 14 |
| ETC Source Four 750kw 36degrees lens : | x 30 |
| (or PROFILES 13/42 - 220V 1kw : | x 50) |
| FRESNEL 220v 2 kw : | x 33 |
| FRESNEL 220v 1 kw : | x 20 |
| CONVEX 220V 1kw : | x 44 |
| * CONVEX projectors can be used instead of FRESNEL,
but in that case, please provide diffusion filters for all CONVEX-FRESNEL projectors.
(Diffusion ratio must be equivalent to ROSCO 114 frost.) | |
| 04: ACCESSORY: | |
| Barn door : for FRESNEL 2kw x 32, FRESNEL 1kw x 20, CONVEX 1kw x24 | Total 76 |
| Floor stand (1.5m height) : | x 10 |
| Floor base (the lower, the better) : | x 16 |
| 05: COLORS FILTERS: | |
| LEE #200 - DOUBLE C.T.BLUE: | |
| ETC Source Four or PROFILES : | x 32 |
| FRESNELS 220v 2 kw : | x 11 |
| FRESNELS 220v 1 kw : | x 16 |
| CONVEX 220V 1kw : | x 41 |
| LEE #201- C.T.BLUE: | |
| ETC Source Four or PROFILES : | x 17 |
| FRESNELS 220v 2 kw : | x 10 |
| CONVEX 220V 1kw : | x 3 |
| LEE #200+ LEE #201 - DOUBLE C.T.BLUE+ C.T.BLUE: | |
| FRESNELS 220v 2 kw : | x 10 |
| FRESNELS 220v 1 kw : | x4 |
| LEE #344 - VIOLET: | |
| ETC Source Four or PROFILES : | x4 |
| FRESNELS 220v 1 kw : | x 2 |
| 06: GENIE or WORKING SCAFFOLD : for set up, focus & take down | x1 |
| 07: BACK STAGE LIGHT : for both stage wings and behind the screen | x5 set |
| 08: LIGHTING TECHNICIAN : | |
| 1st day for set up (Hanging and make circuit and focus) | x6 persons |
| 2nd day for focus | x2 persons |
| last day for take down | x6 persons |

DIRECT ELECTRICITY POWER LINE :

200V~240V - 15AV (3,5kw) each DATAFLASH

x 12

*It must be direct line. DO NOT use dimmer by "non dimmer mode"

ELECTRIC POWER PLUG ADAPTER :

Dumb Type's DATAFLASH projectors has French-type plugs for power cables.

In case different plugs are used at your theater, please provide adapters for 12 DF projectors.

LIGHTING Console board and Dimmer numbers :

Dumb Type will bring a digital console for DMX512 manipulatable dimmers.

All lighting cues and SMPT signals (for synchronization with video) will be already programmed. This console can soft patch from the dimmers from No. 1 to 500, but since the dimmers from No. 200 to 235 are already taken for DF projectors, all the other projectors must be connected to the other dimmers.

DATAFLASH DMX cables :

Dumb Type will bring all DMX cables necessary for DF projectors

ELECTRIC POWER SUPPLY :

- | | |
|---|----------|
| 01: 220V - 5A / for Sound
at Operation booth | x 1 |
| 02: 220V - 5A / for Lighting
at Operation booth | x 1 |
| 03: 220V - 5A / for Video
at Operation booth | x 1 |
| 04: 220V - Total 20A (5A x 4circuit) / for Video Projector
at the back of the stage | 5A x 4 |
| 05: 220V - Total 180A (220v 3.5kw 15A x 12circuit) / for DATAFLASH
for each projectors hanging position on the pipes | 15A x 12 |

- * All the power sources must be provided at designated places by the morning of the first set-up day.

BLACK OUT ON STAGE :

Memorandum requires complete darkness on stage in various scenes during the performance. Any disturbing light (emergency exit signs, footlights in the audience seats, etc) must be extinguished or covered during the performance.

OPERATION TABLES :

The nature of this performance (the sounds are controlled in live and all the technical elements--sounds, video and lighting--are synchronized) requires sounds, video and lighting to be controlled and operated from the operation table installed in the center of the end row of the audience. The table should have a minimum surface space of 600 cm long x 70 cm wide, or a platform which can hold all the control devices. It is absolutely NOT possible to do operations from the existing lighting/sounds operation rooms in your theater (if any). Please arrange the audience seating accordingly.

REHEARSAL ROOM :

We need a dance studio (wooden floor or dance mat, mirrors, etc.) for rehearsals on both the 1st and 2nd setup days. Also, please provide a CD player in the room.

WASHING OF COSTUMES :

Please arrange washing and dry cleaning service for costumes (once everyday during our stay in the theater. it should be available in weekend too). For washing, a washing machine and a dryer will do.

SET UP & TAKE DOWN :

"memorandum" requires 2 days for set up, focusing of the lighting and rehearsals. As for taking down, it takes approximately 3 hours after the last performance. For loading and unloading, please provide 4 persons for the labor for about 3 hours at the beginning of the 1st setup day and after the last performance each.

dumb type performance

memorandum

TECHNICAL REQUIREMENT

Version 5.0. 2001

SCHEDULE

07

dumb type

Rough schedule**First set up dat**

	09:00	10:00	11:00	12:00	13:00	14:00	15:00	16:00	17:00	18:00	19:00	20:00	21:00	22:00
STAGE	Loading & set up		Lunch	Set up & adjustment				Dinner	Adjustment					
LIGHTING	Loading & hang up			Hang up	Focusing			Dinner	Focusing					
SOUND	Loading & set up			Set up				check	Dinner	System check				
VISUAL	Loading & set up			Set up				Dinner	System check					
PERFORMER					Warm up & rehearsal				Dinner	Rehearsal				

Check - Please note that during the sounds check we will play the sounds to the full of the required level for the performance. The same in the rehearsals as well.

Second set up dat

	09:00	10:00	11:00	12:00	13:00	14:00	15:00	16:00	17:00	18:00	19:00	20:00	21:00	22:00
STAGE	Adjustment		Lunch	Adjust	Tech rehearsal	Part rehearsal (Stage)				Dinner	Adjust	Dress rehearsal		
LIGHTING	Focusing		Lunch	Focusing						Dinner	Adjust			
SOUND	Adjustment		check	Lunch						Dinner	Adjust			
VISUAL	Adjustment		Lunch	Adjust						Dinner	Adjust			
PERFORMER	Warm up													

First performance day

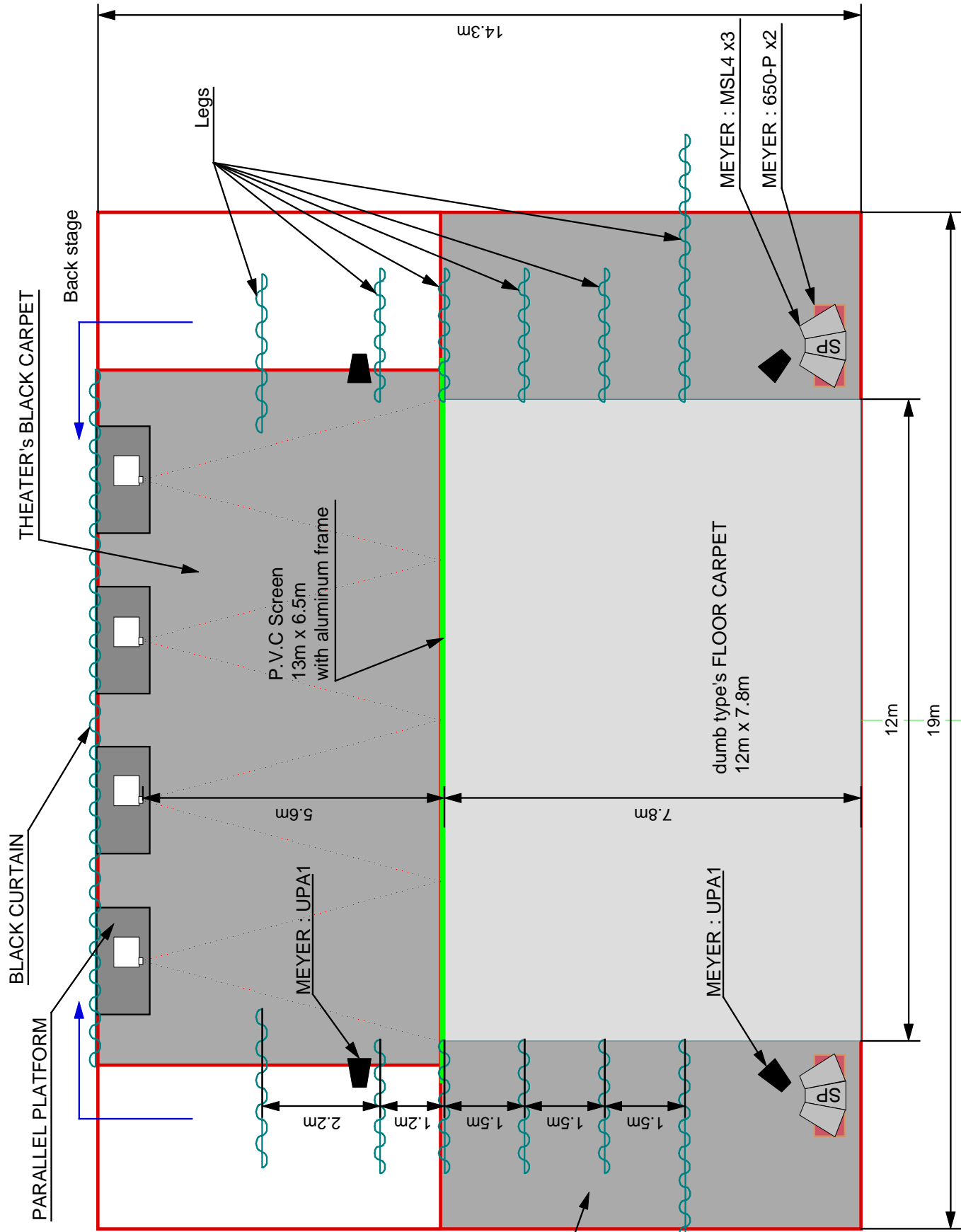
	09:00	10:00	11:00	12:00	13:00	14:00	15:00	16:00	17:00	18:00	19:00	20:00	21:00	22:00
STAGE	Adjustment		Lunch	Adjust	Part rehearsal				Dinner	Stage set up	Performance #1		Meeting	
LIGHTING														
SOUND														
VISUAL														
PERFORMER														

dumb type Technical Staff

Stage : So Ozaki
 Sound : Ryoji Ikeda
 Visual : Shiro Takatani. Richi Owaki
 Lighting : Takayuki Fujimoto
 Technical Manager : Takayuki Fujimoto
 Company Manager : Yoko Takatani

Venue Technical Staff

	Set up #1	Set up #2	P#1	P last
Stage :	4p	2p	1p	4p
Sound :	2p	2p	1p	2p
Lighting :	6p	6p	1p	6p
Stagehand:	4p(3hour)		4p(3hour)	



Auditorium

dumb type
 performance
 memorandum
 GENERAL
 Ground plan
 Version 5.
 2001.
 unit = m . 1/100 .
 by kinsei

<REMARKS>

- (19) ETC Source Four 19' x6
- (26) ETC Source Four 26' x14
- (36) ETC Source Four 36' x30

| Barn door = x76

(36) 2kw Fresnel x33

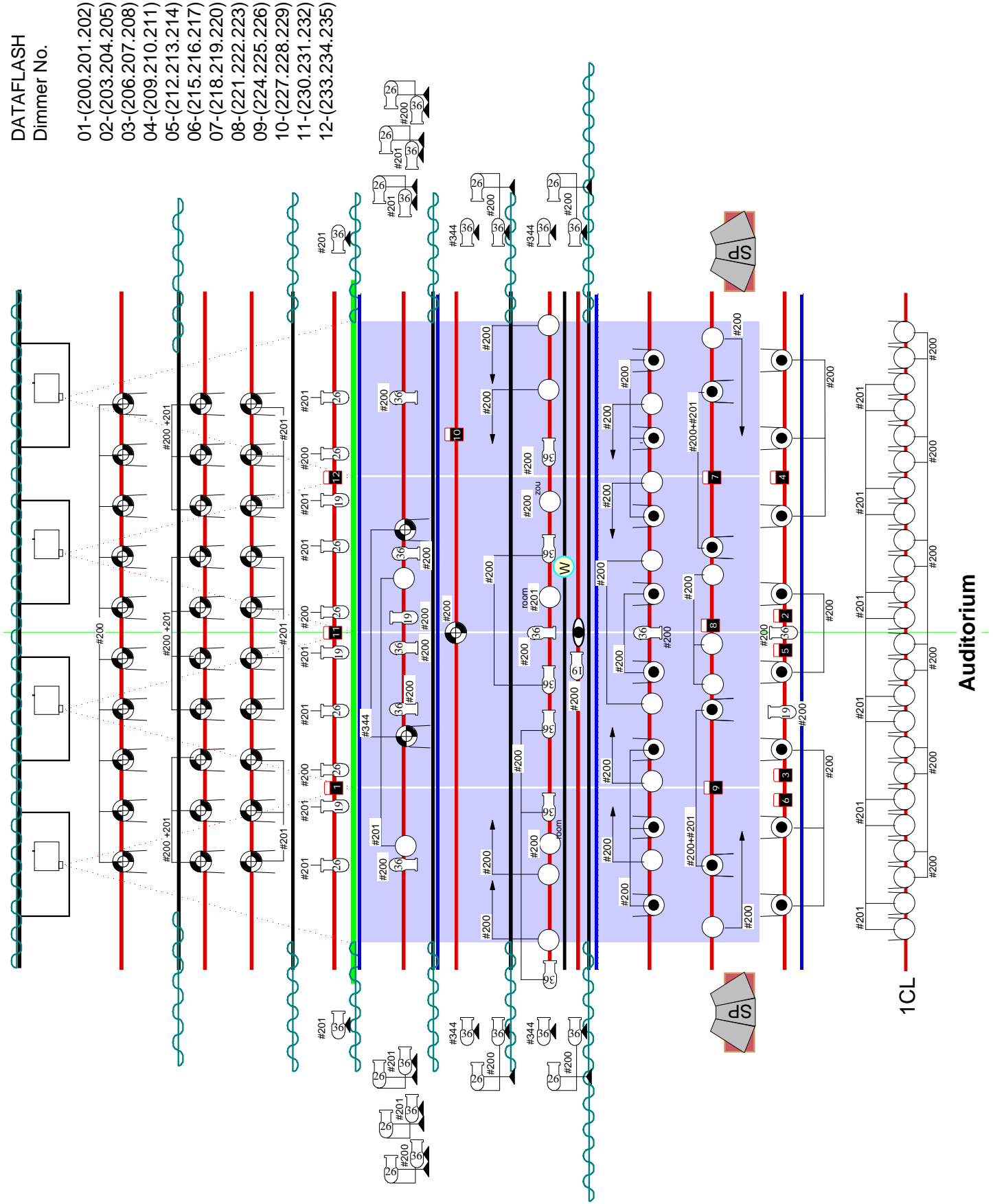
(36) 1kw Fresnel x20

(36) 1kw Convex x 44

All colour number use LEE (ex, #200 = LEE #200)

■ DataFlash x12 < Direct Line >

dumb type performance memorandum GENERAL Lighting plan Version.5. January 2001. unit = m . 1/100 . by kinsei



DATAFLASH
Dimmer No.

- 01-(200.201.202)
- 02-(203.204.205)
- 03-(206.207.208)
- 04-(209.210.211)
- 05-(212.213.214)
- 06-(215.216.217)
- 07-(218.219.220)
- 08-(221.222.223)
- 09-(224.225.226)
- 10-(227.228.229)
- 11-(230.231.232)
- 12-(233.234.235)

Auditorium

1CL