



STAGE

See to "hanging plot" - page 08-10

01 : STAGE OPENING (Proscenium) :

Width : over 11m
Height : over 7m

02 : STAGE AREA :

Width : over 21m (Including both stage wings, 5m each)
Depth : over 15m
Height : over 8.5m till batten / hanging pipe

03 : A BATTEN OR HANGING POINT FOR VIDEO PROJECTOR :

One batten/hanging point must exist at the above of stage front.
(13.5m from P.V.C.Screen, 7m height from stage floor.)

04 : STAGE FLOOR : Wooden floor appropriate for contemporary dance performance.

Also NO rake.
And should be possible to use the screw to floor. (See to below)

05 : AUDITORIUM SEAT :

Regular theater seats, higher in the back.
All seats must have a good view of the stage floor surface.

06 : BLACK MOQUETTE/CARPET : 20m(L) x 2m(W) x 4roll

For both stage wings and stage front,
in order to cover the floor surface with black, and to absorb unwanted footstep noises.
It must be provide new roll. We will cut it.

07 : BLACK LEGS : Width over 3m x 5sets

Length to cover from the floor to the ceiling.
(Lighting projectors hanging at height minimum 8m)

08 : STAGE FRONT SIDE BLACK LEGS : x 1set

Margin must be covered in case the theater proscenium opening is wider
than 12 meters. The legs for it must be tall enough to cover from floor to ceiling.

09 : BLACK BORDER : Width over 13 m x 6

10 : BLACK CURTAIN : Width over 13 m x Height over 8 m (or BLACK TRAVELER CURTAIN) : x 2

Please provide two of black curtains which go up & down or
two sets of traveler curtains and tracks.
If the venue does not have enough height for up & down and not have traveler curtains,
we can set dumb type's. We bring 3 traveler curtains and tracks. (See to page 8)

11 : TABLE : 60cm x180cm x70cm(h) : x 3

For sounds, video and lighting operation.
The table should be installed in the center of the end row of the audience seats.

12: THEATER STAGE TECHNICIAN :

1st setup day -	x 4 persons for unloading and setup
2nd day -	x 6 persons for setup (Mirror Floor setup this afternoon)
All performance days -	x 2 persons for go up & down pipes at during performance
Last day	x 6 persons for strike down and loading

MIRROR FLOOR setup:

No special skill is required for this job, but we need some strong hands as
these mirror floor panels are very HEAVY and FRAGILE (each panel 1m by 1m, 5kg).
Simple instructions and training will be given on the second setup day morning.

* Dumb Type will bring the special mirror floor panels to cover an area of 10m x 11m.
The size of one panel is 1m x 1m, and there are 110 panels.

* These floor panels, as well as the bottom of screen, must be fixed on to the theater floor
with several dozens of wooden screws (3mm in diameter, 20mm long).





STAGE

SET UP & TAKE DOWN :

"Voyage" requires 2 days for setup, focusing of the lighting and rehearsals.
As for taking down after the last performance,

IMPORTANT: We do **NEED** at least 1 HOUR only to take away the floor panels
before we could proceed on to any other work during this time.

Only the theater stage technician for mirror floor from the venue
and dumb type staff should work on the floor panels.

All the other staff and crews must wait (for about 1 hour) to begin to take down
except stage side floor stand lighting projectors.

See to "Provisional schedule" - page 07.

BLACK OUT ON STAGE :

"Voyage" requires complete darkness on stage in various scenes during the performance.
Any disturbing light (emergency exit signs, footlights in the audience seats, etc) must be
extinguished or covered during the performance.

OPERATION TABLES :

The nature of this performance (the sounds are controlled in live and all the technical
elements -- sounds, video and lighting--are synchronized)
requires sounds, video and lighting to be controlled and operated from the operation table
installed in the center of the end row of the audience.

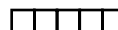
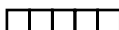
The table should have a minimum surface space of 600 cm long x 70 cm wide,
or a platform which can hold all the control devices.

It is absolutely **NOT** possible to do operations from the existing lighting/sounds operation
rooms in your theater (if any). Please arrange the audience seating accordingly.

BACK STAGE

COSTUMES AND PROPS

- | | |
|--|-----------------|
| 01: DRESSING ROOM : | minimum 3 rooms |
| 02: FULL-LENGTH MIRROR : | x 2 |
| 03: TABLE LIGHT for both stage wings and behind the screen : | x 5 |
| 04: CHAIR to put costumes and props at the back stage : | x 15 |
| 05: HANGER with RACK for costumes at back stage : | x 2 |
| 06: IRON & IRONING BOARD in dressing room : | x 1 set |
| 07: WASHING and DRY CLEANING SERVICE for costumes : | everyday |
| Please arrange washing and dry cleaning service for costumes.
Once everyday during our stay in the theater. it should be available in weekend too.
For washing, a washing machine and a dryer will do. | |
| 08: REHEARSAL ROOM : | x 1 room |
| We need a dance studio (wooden floor or dance mat, mirrors, etc.)
for rehearsals on both the 1st and 2nd setup days. | |
| 09: CD player : | x 1 |
| Provide a CD player in the room for rehearsals. | |





SOUND

01: SPEAKER

* Dumb Type prefer following sound system :

MEYER : MSL4 (Powered Hi-box speaker)	x 6 (Lx3,Rx3)
MEYER : 650-P (Powered Sub Woofer)	x 4 (Lx2,Rx2)
MEYER : Line Driver LD-1A	x 1
MEYER : UPA1 (for stage monitor)	x 4
SPECIFIC TECHNICIAN : for adjustment of MEYER SYSTEM	x1 person

If venue have same power/quality as the MEYER system.

In that case subject to negotiation.

Hi-box speaker :	x 6 (Lx3,Rx3)
Powered Sub Woofer :	x 4 (Lx2,Rx2)
Stage monitor :	x 4

* Regarding the set-up positions of the speakers,
See to "hanging plot" - page 08 - 09

02: Equalizer :

MEYER : CP-10	x 1 for F.O.H
Graphic Equalizer for Stage monitors :	x 4 ch

03: CD Player :

x 1

04: SHURE UHF Lavalier (Tie-Pin) Type Wireless Microphone with receiver :

x 4 set

05: Snake (Multi) Cable :

x 10 line

Between Stage and operation booth

Line main :	x 2 (L&R)
Monitor :	x 4 (LR x 2)
Mic :	x 4

06: Inter Communication System :

x 5 set

Head sets at both stage sides as well as sounds, video and lighting tables.

07: SOUND TECHNICIAN : for set up and take down

1st day :	x2 persons for set up
2nd day :	x2 persons for set up
last day :	x2 persons for take down

* dumb type bring sound mixer - YAMAHA O3D

* The nature of this performance (the sounds are controlled in live and all the technical elements--sounds, video and lighting--are synchronized) requires sounds, video and lighting to be controlled and operated from the operation table installed in the center of the end row of the audience.

* Actual sound pressure is 120 decibel at the mixing position without distortion.



VIDEO

Venue staff for signal cable wiring :

Assist for video signal cable wiring

from operation table in the center of the end row of the audience to the stage.

1st setup day -

x 1 persons for set up

Last performance day -

x 1 persons for strike down

Image size :

The video image size on P.V.C.Screen, is setup upstage on back edge of the mirror floor,
10m width and 7m height.

Video/Data Projector :

dumb type bring "SHARP xg-p20x" video/data projector x 1

Hanging Flame for Video/Data Projector :

dumb type also bring "Hanging Flame" for video/data projector

including hanger for hanging pipe and safety wire

x 1

Flame size : 450mm(w) x 600mm(d) x 450mm(h)

Total weight : Projector+Flame roughly 35kg

Hanging position :

"SHARP xg-p20x" need to 13m from the screen to the projector lens
for generate 10m(w) x 7m(h) image distance.

Also stage set and lighting need minimum 2m space from stage back wall to the screen.

So the stage depth should be 15m minimum for "Voyage".

The venue should have batten, truss or some hanging point at
front stage position 2m from mirror floor.

If the venue hasn't it should make temporally hanging point at this position.

The height of video/data projector position is 7m high from stage floor.

Power for projector :

"SHARP xg-p20x" need 100-240V AC, 50/60Hz (Multi-Voltage) - 750W power supply.

Cables :

The Cables (for visual and shutter operations)

will run from the operation table (back of the audience) to the projector. (stage front 7m high)

Please note that some of the cables may run through the audience floor.

In case there is a problem or if you have special cable routes, please let me know.

SLIDE PROJECTOR

Slide projector :

Dumb Type bring one slide projector.

It set up at the operation table or venue control room.

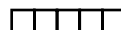
This projector need 100V - 240V 500W power.



L I G H T I N G

See to "Lighting plan" - page 11-12

- 01: 14" ~ 17" VGA Monitor Display for MS/DOS - Windows : x 1
- 02: DIMMERS: DMX512 manipulable 3kw each : x 90unit
- 03: PROJECTORS :
- ETC Source Four 750kw 19 degrees lens : x 10
 - ETC Source Four 750kw 26 degrees lens : x 25
 - ETC Source Four 750kw 36 degrees lens : x 5
 - ETC Source Four 750kw 50 degrees lens : x 14
 - PAR64 MFL lamp 1kw : x 34
 - 1-CEL BROAD for CYC or Flood 1kw from ceiling batten x 29
 - 1-CEL BROAD for CYC or Flood 1kw from rear floor x 30
 - Moving spot light Martin MAC 500/E x 2
 - HMI 2500w with Barndoor & DMX Shutter x 1
- 04: ACCESSORY:
- Iris : for ETC Source Four 26 degrees : x 15
 - Floor base (Lower is the better) : x 7
 - Floor stand (1.5m height) : x 1
 - Floor base for HMI with dolly : x 1
- 05: COLORS FILTERS:
- LEE #200 - DOUBLE C.T.BLUE : for
ETC Source Four x 10
 - LEE #201 - C.T.BLUE : for
ETC Source Four x 33
 - LEE #119 - Dark Blue : for
1-CEL BROAD for CYC or Flood 1kw x 15
(It not ROSCO119/duffusion. LEE#119 - Dark Blue)
 - LEE #195 - Zenith Blue : for
1-CEL BROAD for CYC or Flood 1kw x 15
- 06: FOG MACHINE with FAN : Dumb Type prefer DIFFUSION FOGGER DF-50 x 2
- 07: GENIE or WORKING SCAFFOLD : for set up, focus & take down x 1
- 08: BACK STAGE LIGHT : for both stage wings and behind the screen x 5
- 09: LIGHTING TECHNICIAN :
- 1st day x 6 persons for set up (Hanging and make circuit and focus)
 - 2nd day x 4 persons for focus
 - Last day x 6 persons for take down
- 10: LIGHTING Console board and Dimmer numbers :
- Dumb Type will bring a digital console for DMX512 manipulatable dimmers.
All lighting cues and SMPT signals (for synchronization with video) will be already programmed. This console can soft patch from the dimmers from No. 1 to 512, but since the dimmers from No. 201 to 224 or No. 451 to 480 are already taken for DATAFLASH projectors,
Also 2 of "Moving spot light Martin MAC 500/E" use dimmer address No. 481 to 512, all the other projectors must be connected to the other dimmers.
- 11: DATAFLASH DMX cables :
- Dumb Type will bring all DMX 3pin cables necessary for DATAFLASH projectors.





POWER SUPPLY

01: DIRECT ELECTRICITY POWER LINE :

200V~240V - 10AV each DATAFLASH x 10

*It must be direct line. DO NOT use dimmer by [non dimmer mode]

02: ELECTRIC POWER PLUG ADAPTER :

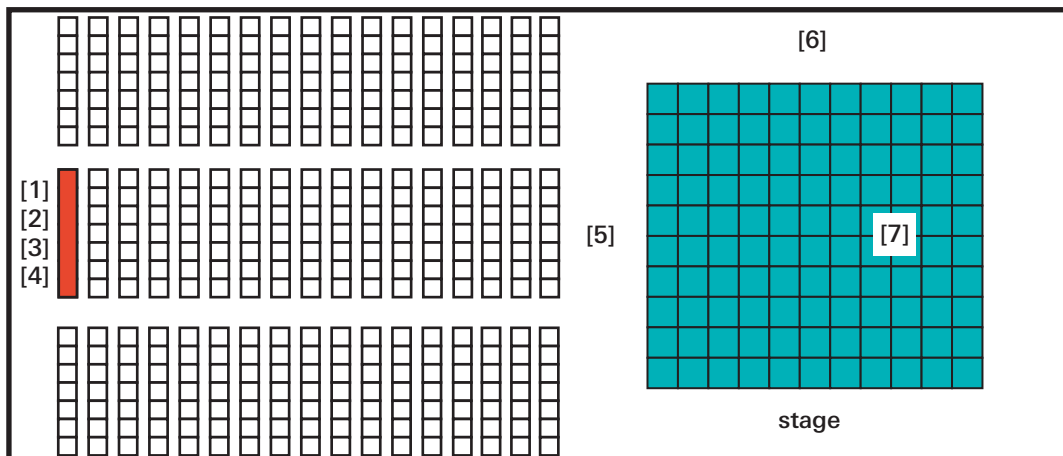
Dumb Type's DATAFLASH projectors has French-type plugs for power cables.
In case different plugs are used at your theater,
please provide adapters for 10 of DATAFLASH projectors.



03: ELECTRIC POWER SUPPLY :

- [1]: 200V~240V - 5A / for Sound x 1
at the operation table
- [2]: 200V~240V - 5A / for Lighting x 1
at the operation table
- [3]: 200V~240V - 5A / for Video x 1
at the operation table
- [4]: 200V~240V - 5A / for Slide projector x 1
at the operation table or the control room
- [5]: 200V~240V - 5A / for Video Projector
at the video projector hanging position
- [6]: 200V~240V - 5A / for Typewriter and CCD Camera
at Right side stage
- [7]: 200V~240V - Total 100A (10A x 10circuit) / for DATAFLASH x 10
for each projectors hanging position on the pipes

All the power sources must be provided at designated places
by the morning of the first set-up day.





GENERAL SCHEDULE

FIRST SET UP DAY

	09:00	10:00	11:00	12:00	13:00	14:00	15:00	16:00	17:00	18:00	19:00	20:00	21:00	22:00
STAGE		Screen	Lunch	Set up						Dinner	Adjustment			
LIGHTING		Unloading	Hanging	Hanging&Checking				Focus	Focus					
SOUND			Set up	Sound check	Set up&Adjustment		Fix Height		Sound check	Dinner	System check			
VISUAL			Set up	Lunch	Set up				Focus					
PERFORMER			Set up	Warm up & rehearsal										

SECOND SET UP DAY

	09:00	10:00	11:00	12:00	13:00	14:00	15:00	16:00	17:00	18:00	19:00	20:00	21:00	22:00
STAGE		Adjustment	Lunch	Mirror floor&carpet				System check	SCENE CHANGE REHEASAL		Dinner	Set up	DRESS REHEASAL	
LIGHTING		Focusing		Programing										
SOUND		Adjustment	Sound check		Programing									
VISUAL		Adjustment	Focus	Lunch										
PERFORMER		Warm up			Warm up									

FIRST PERFORMANCE DAY

	09:00	10:00	11:00	12:00	13:00	14:00	15:00	16:00	17:00	18:00	19:00	20:00	21:00	22:00
STAGE			Lunch	System check		Part Rehearsal				Adjust Cleanup Dinner	House Open	Performance #01		
LIGHTING		Cue adjustment												
SOUND														
VISUAL			Lunch											
PERFORMER				Warm up										

LAST PERFORMANCE DAY

	09:00	10:00	11:00	12:00	13:00	14:00	15:00	16:00	17:00	18:00	19:00	20:00	21:00	22:00
STAGE				System check		Part Rehearsal				Adjust Cleanup Dinner	House Open	Performance Last	Strikedown Mirror Floor	Strike down Loading
LIGHTING														
SOUND														
VISUAL														
PERFORMER				Warm up								3 hours		

Dumb Type Technical Staff/ Member List

Technical Manager / Lighting : Takayuki Fujimoto (kinsei)
kinsei@dumbtype.com
Stage / Freighter : So Ozaki
so.ozaki@nifty.com
Sound : Yoshihisa Fukuhara
Video : Shiro Takatani / Ichiro Awazy
Company Manager : Yoko Takatani
yoko@dumbtype.com

Costume management / Performer : Noriko Sunayama
Takao Kawaguchi
Performer : Hidekazu Maeda
Manna Fujiwara
Mayumi Tanaka
Misako Yabuuchi
Seiko Ouchi
Yuko Hirai

Venue Border + Venue Legs & Truss(dt) + PVC screen(dt)

Special KABUKI pipe(dt) + Black plastic sheet(dt)

Black curtain(UP/DOWN) or Traveler curtain(dt) 15m(W)

Venue Legs Venue Border

Traveler curtain(dt) 16.5m(W) Venue Border

Stage set=Wire(dt)

Venue Legs Venue Border

Stage set=Swinging Light(dt)

Black curtain(UP/DOWN) or Traveler curtain(dt) 15m(W) Venue Legs

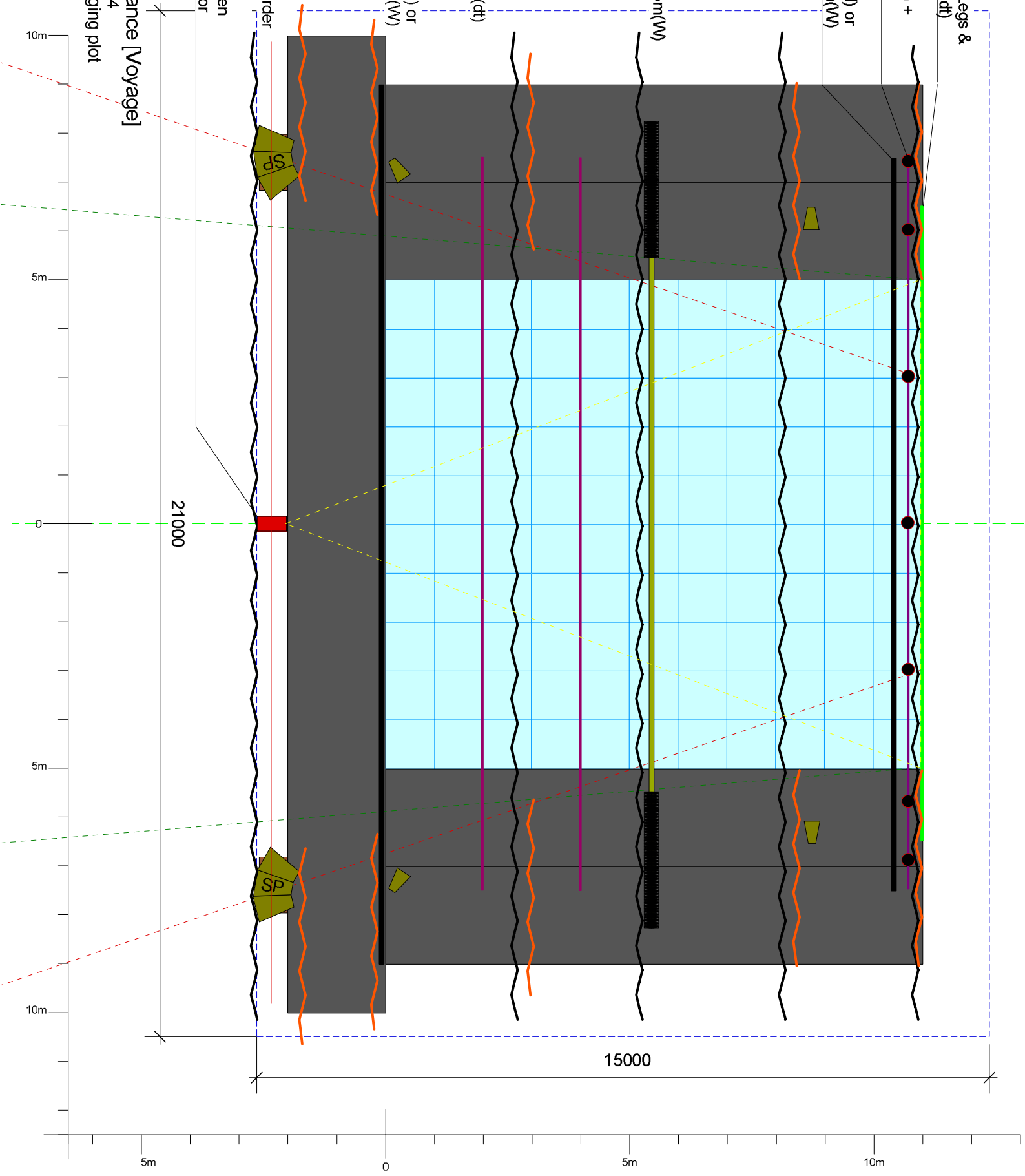
Proscenium or Venue Legs & Venue Border Video/data projector(dt) 13m far from P.V.C.screen 7m height from stage floor

Technical Requirement

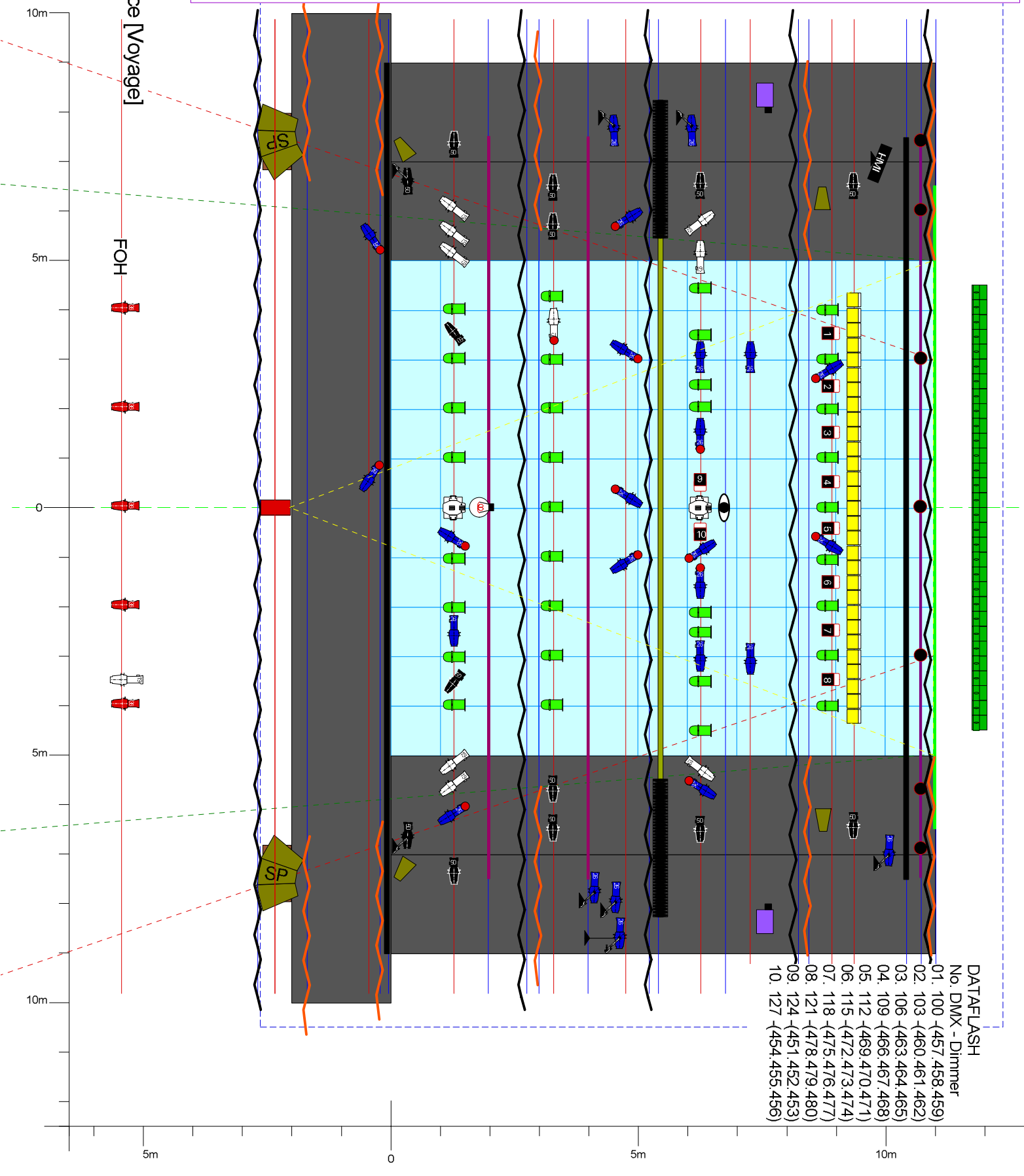
dumb type performance [Voyage]

version_4_November 2004 Floor & Soft goods hanging plot

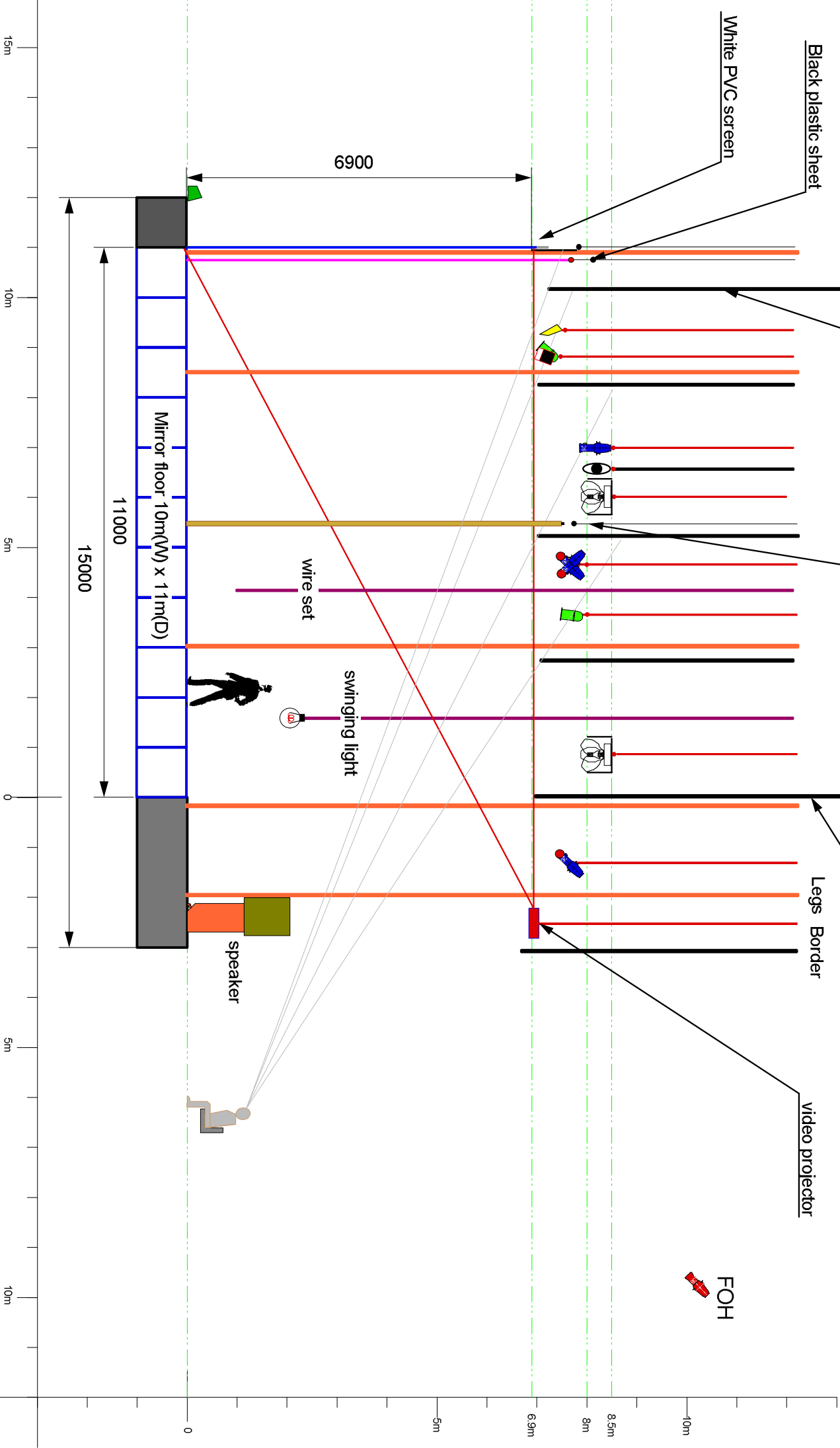
08



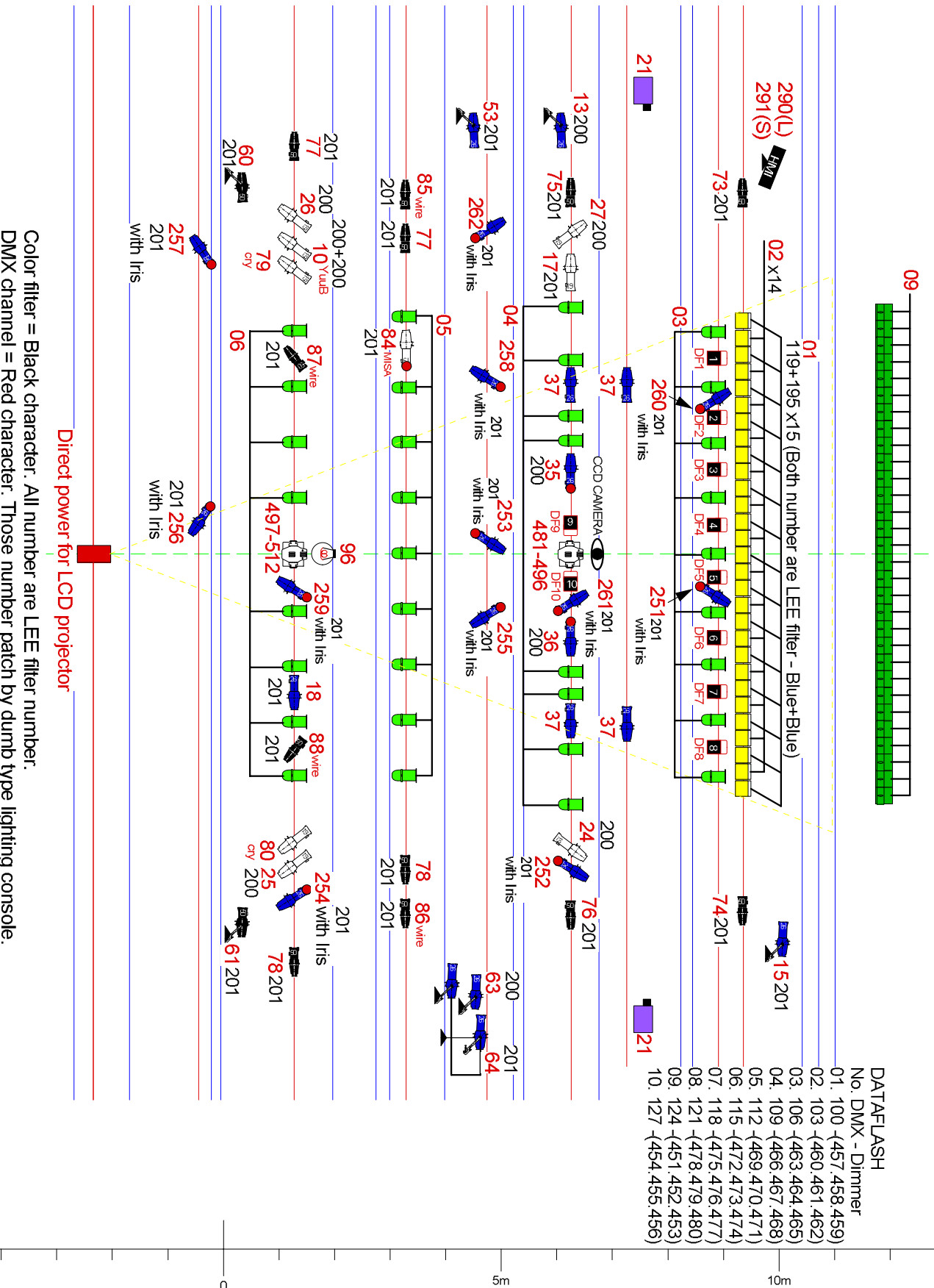
- <KEYS>
- ETC Source four 19' x 9
 - ETC Source four 19' with IRIS x 1
 - ETC Source four 26' x 11
 - ETC Source four 26' with IRIS x 14
 - ETC Source four 36' x 5
 - ETC Source four 50' x 14
 - PAR 64 MFL x 34
 - Flood 1k for CYC (Ceiling) x 29
 - Flood 1k for CYC (Floor) x 30
 - Martin MAC 500E x 2
 - HMI with shutter & Barndoor x 1
 - Floor base stand x 7
 - High Stand (1.5m) x 1
 - Fog machine with Fan
 - dt CCD Camera
 - dt Swinging lamp 100W 100W/200V
 - DATAFLASH X10 < Direct Line >



Technical Requirement
dumb type performance [Voyage]
Version 4_November 2004
All hanging plot



<KEYS>	
	ETC Source four 19' x 9
	ETC Source four 19' with IRIS
	ETC Source four 26' x 11
	ETC Source four 26' with IRIS
	ETC Source four 36' x 5
	ETC Source four 50' x 14
	PAR 64 MFL x 34
	Flood 1k for CYC (Ceiling) x 29
	Flood 1k for CYC (Floor) x 30
	Martin MAC 500E x 2
	HMI with shutter & Barndoor x 1
	Floor base stand x 7
	High Stand (1.5m) x 1
	Fog machine with Fan
	dt CCD Camera
	dt Swinging lamp 100W 100W/200V
	DATAFLASH X10
< Direct Line >	

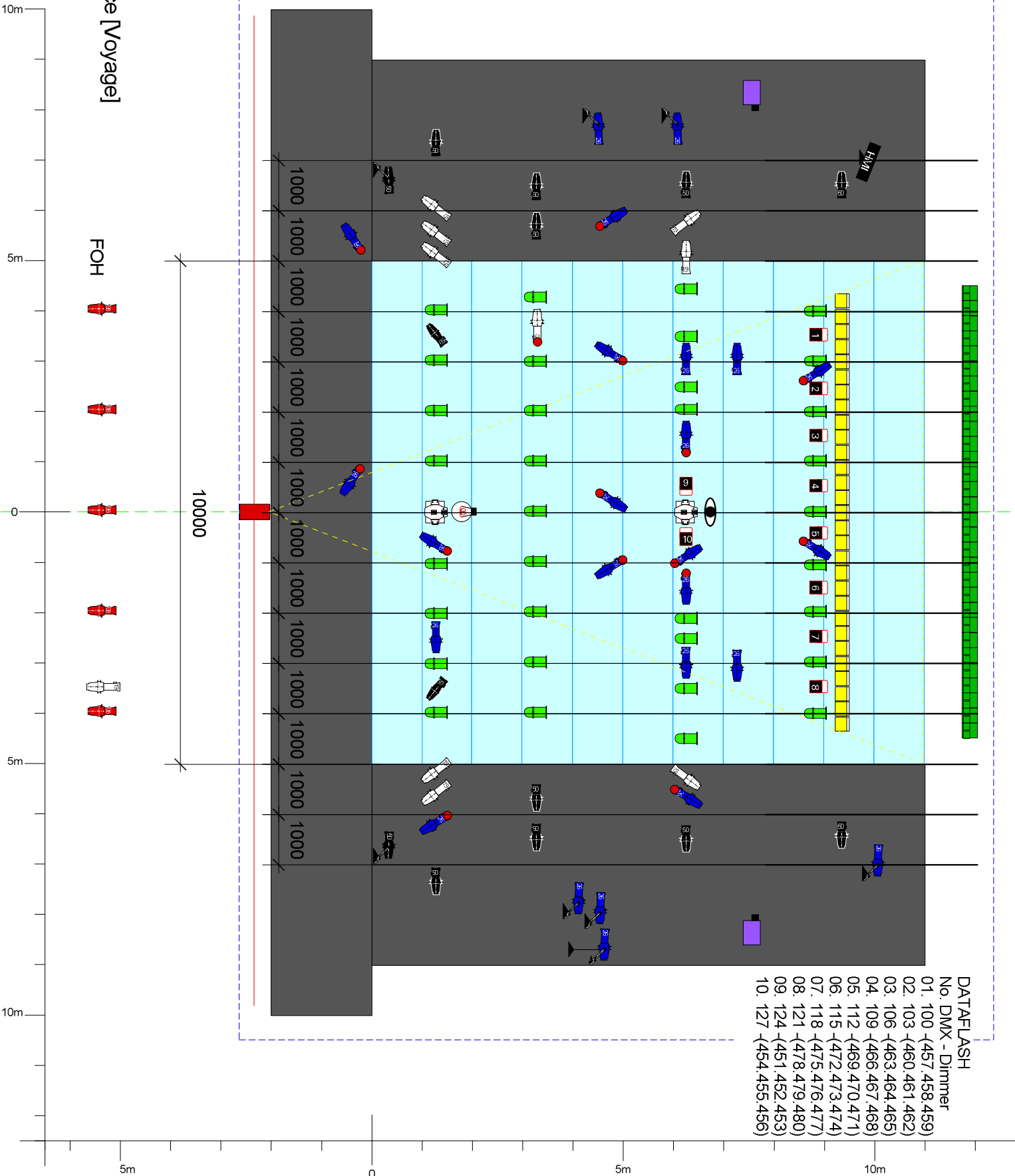


Color filter = Black character. All number are LEE filter number.
 DMX channel = Red character. Those number patch by dumb type lighting console.

Technical Requirement
 dumb type performance [Voyage]

version_4_November 2004
 Lighting DMX Channel & Color Plot

- <KEYS>
- ETC Source four 19' x 9
 - ETC Source four 19' with IRIS x 1
 - ETC Source four 26' x 11
 - ETC Source four 26' with IRIS x 14
 - ETC Source four 36' x 5
 - ETC Source four 50' x 14
 - PAR 64 MFL x 34
 - Flood 1k for CYC (Ceiling) x 29
 - Flood 1k for CYC (Floor) x 30
 - Martin MAC 500E x 2
 - HMI with shutter & Barndoor x 1
 - Floor base stand x 7
 - High Stand (1.5m) x 1
 - Fog machine with Fan
 - dt CCD Camera
 - dt Swinging lamp 100w 100v/200v
 - DATAFLASH x10 < Direct Line >



Technical Requirement
 dumb type performance [Voyage]
 version 4_ November 2004
 Lighting projector distance